

# Highways

Highways Commissioning  
Block 5, 6<sup>th</sup> Floor East  
Shire Hall  
Gloucester GL1 2TH

08000 514 514  
Highways@gloucestershire.gov.uk

---

Reference: 11448596

Date: 9<sup>th</sup> February 2024

Dear Resident,

**What: Road closure for carriageway patching.**

**Where: Burford Road to Larket Hill Wood, Aldsworth, - see overleaf for details of road closure.**

**When: Week Commencing 19<sup>th</sup> February 2024 for two days, 07:00-19:00  
(Please Note: These dates and times can change without warning  
please see our explanation below)**

On behalf of Gloucestershire County Council, we will shortly be patching a section of carriageway at the above location to repair localised faults and improve the condition of the road.

Our patching programme is dependent on several factors. It can be affected by things like; heavy rain, snow, changes in temperatures and other weather events as well as plant breakdown and unforeseen technical issues that arise once work has begun. All this means **scheme dates and details can change at short notice and without warning. Our apologies for any inconvenience this may cause.**

**These works are in advance of a surface dressing treatment being applied to the full site in the summer 2024.**

## ROAD CLOSURE

We will be patching in multiple locations along the stretch of road marked in red on the map overleaf.

We appreciate road closures are inconvenient, but in order to keep you and the team working on the road safe it is necessary. We have planned the work so we can be in and out as quickly as possible.

## Access

To ensure the safety of pedestrians, road users and our workforce **no vehicular access** will be permitted on the section of the road we will be working on at a time. The crew may allow essential access (i.e. medical appointment) in and out of the closure area, when it is safe to do so, but they need periods without vehicles to get the actual scheme done. For this reason, we ask you to limit

# Highways

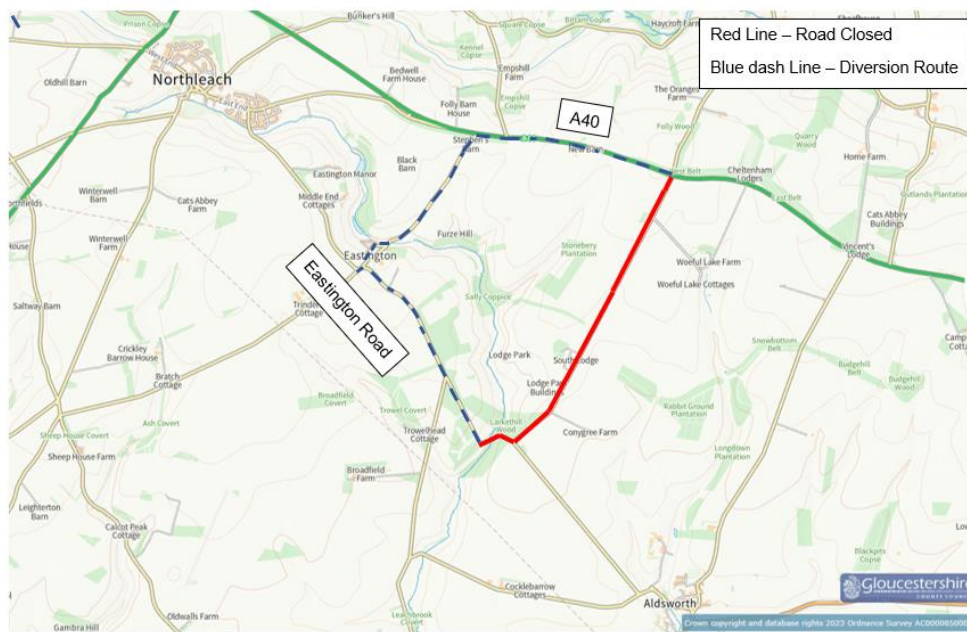
any vehicular movement to a minimum. Please plan your essential journeys ahead and allow plenty of time.

## Parking

Please note that **parking on the road** (as marked red on the map) **will be prohibited** during the works. We will make every effort to contact the owners of any vehicles left parked on road, but if unsuccessful, we may have to arrange for them to be removed to a secure area until collected by owners. Off-road parking will be unaffected. These works are in place to improve the condition of the road, which you will benefit from, so your co-operation would be much appreciated.

Thank you in advance for your patience and co-operation. If you have any queries, please call us on 08000 514514

## Burford Road to Larket Hill Wood, Aldsworth– closure area



Yours faithfully,

Nick Holder, Supervisor for and on behalf of Ringway